

# Canopy Cover Loss Assessment in the Long Branch Neighbourhood

---

Jackie De Santis, Master of Forest  
Conservation Student, Faculty of  
Forestry, UofT

Analysis part of the directed studies  
course, supervisor D. Puric-  
Mladenovic



# Background

- The work outlined in this presentation was done as part of the larger collaborative project between the LBNA and Neighbourwoods, and D. Puric-Mladenovic
- The presented results are part of the directed studies course by Jackie De Santis – taken from January to April 2019 supervised by D. Puric-Mladenovic
- The more detailed work and assessment continue as a Master of Forest Conservation capstone paper (to be finished by January 2020)
- Further information can be attained from D. Puric-Mladenovic



UNIVERSITY OF  
**TORONTO**



**LONG BRANCH**  
NEIGHBOURHOOD  
ASSOCIATION

## Background: Consent and related minor variance applications in Long Branch

- There were a total of 93 consent applications made in the Long Branch Neighborhood since 2012
- 37 of the applications were refused either by the COA and OMB, refused by the COA and up for appeal with the OMB, withdrawn or pending a COA decision
- 56 applications were ultimately approved with conditions either by the COA/OMB



UNIVERSITY OF  
**TORONTO**



**LONG BRANCH**  
NEIGHBOURHOOD  
ASSOCIATION

# Methodology: Mapping approved consent applications

- An analysis was carried out using a document provided by Vice Chair Judy Gibson of the LBNA, containing a summary of consent applications in Long Branch since 2012, compiled by the City Planning Department
- Dr. Puric-Mladenovic transcribed the information into an excel document
- Google Earth was used to generate a file with placemarks at 56 of the sites that had been approved by the COA (with conditions) or, if rejected, had been approved in the appeal process with the OMB

# Methodology: Digitizing the canopy

- The canopy of each of the 56 parcels approved for development were assessed using multiyear images in Google Earth.
- Imagery from 2009, taken prior to development, was used to digitize the tree canopy in the affected parcels.
  - the images from 2009 were clear and provided a good reference year to observe the change
  - the tree canopy for each parcel was digitized
- The world imagery basemap, Google Earth and Google Maps Streetview were used to cross-reference the canopy between 2009 and 2018
  - Data Attributes were added to the 2009 canopy layer to indicated whether canopy had been removed or is still present.

**Results:**  
Canopy cover  
changes  
between 2009  
and 2018

- The total area of canopy in 2009 on the 56 parcels, affected by development, was 31,658 m<sup>2</sup> or 3.17 ha
- The total area of canopy lost on these 56 parcels is 13,560 m<sup>2</sup> or 1.36 ha
- **The percentage canopy loss between 2009 and 2018 is therefore 42.8%**

# Results: Imagery showing canopy cover changes

- The following pages show the canopy effected on each parcel that had a consent application approved
- The canopy outlined in green was not removed following development, and the canopy in red is not present in 2018 and likely removed due to the development
- The placemark associated with the address of consent application is marked with a red point and labelled with a number linking it to the attribute table
- Note: the world imagery basemap shown in these images may not reflect the current status of the canopy



- ◆ Parcels with approved consent applications
- Canopy Cover 2009-2018
- Retained
- Removed

Projection: WGS\_1984\_Web\_Mercator\_Auxiliary\_Sphere

# Screenshot Index

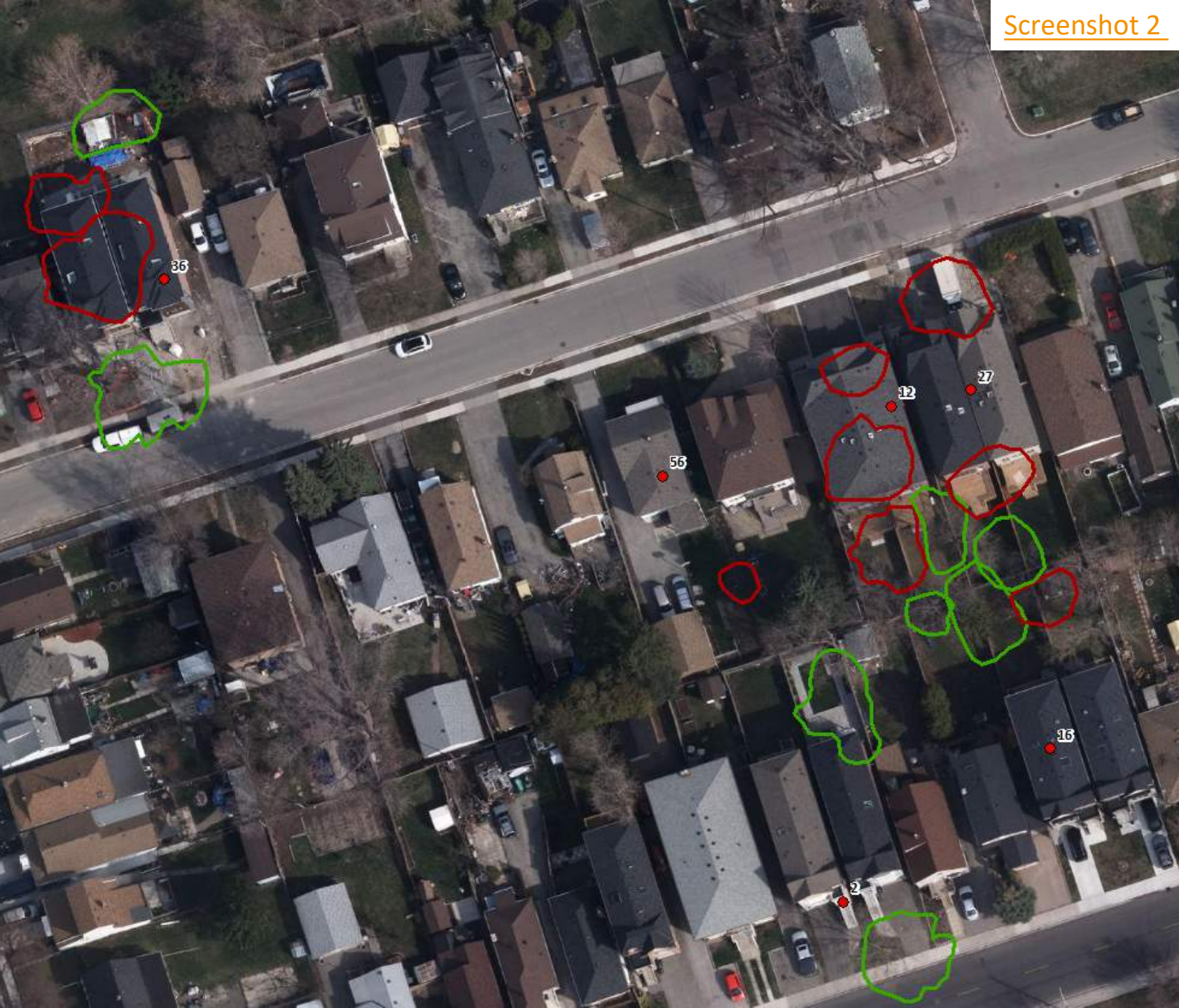
## Streets bounding each screenshot:

- [\(1\)](#) [North] Elder Ave. [East] Twenty Ninth St. [South] Lake Shore Blvd. West [West] Thirty Second St.
- [\(2\)](#) [North] Laburnham Ave. [East] Twenty Sixth St. [South] Elder Ave. [West] Twenty Ninth St.
- [\(3\)](#) [North] Lake Shore Blvd. [East] Twenty Third St. West [South] Meaford Ave. [West] Twenty Fifth St.
- [\(4\)](#) [North] Horner Ave. [South] Alhena Ave. [West] Thirtieth St.
- [\(5\)](#) [North] Ash Cres. [East] Twenty Seventh St. [South] Jasmine Ave. [West] Twenty Eight St.
- [\(6\)](#) [North] Jasmine Ave. [East] Twenty Seventh St. [South] Lake Promenade [West] Elton Cres.
- [\(7\)](#) [North] Garden Place [East] Fortieth St. [South] Hilo Rd. [West] Forty First St.
- [\(8\)](#) [North] Lake Shore Blvd. West [East] Thirty Seventh St. [South] Lake Promenade [West] Fortieth St.
- [\(9\)](#) [North] Railroad [East] Twenty Ninth St. [South] Lake Shore Blvd. West [West] Thirty Second St.
- [\(10\)](#) [North] Dominion Rd. [East] Long Branch Ave. [South] Park Blvd. [West] Thirty Seventh St.
- [\(11\)](#) [North] Railroad [East] Twenty Sixth St. [South] Elder Ave. [West] Twenty Ninth St.
- [\(12\)](#) [North] Elder Ave. [East] Twenty Fourth St. [South] Daisy Ave. [West] Twenty Sixth St.
- [\(13\)](#) [North] Marina Ave. [East] Thirty First St. [South] Muskoka Ave. [West] Long Branch Ave.
- [\(14\)](#) [North] Carnation Ave. [East] Faustina Dr. [South] Elder Ave./Birmingham St. [West] Twenty Sixth St.
- [\(15\)](#) [North] Lake Shore Blvd. West [East] Twenty Eight St. [South] Ash Cres. [West] Thirty First St.
- [\(16\)](#) [North] Birmingham St. [East] Twenty First St. [South] Lake Shore Blvd. West [West] Twenty Second St.
- [\(17\)](#) [North] Birchlea Ave. [East] Crystal Cres. [South] Lake Promenade [West] Thirty First St.
- [\(18\)](#) [North] Lake Shore Blvd. West [East] Fortieth St. [South] James St. [West] Forty First St.



Name	UniqueID	Property Address	COA Decision	OMB Decision	Year
1	1	15 Thirty Second Street	Approved with Conditions	N/A	2012
29	38	25 Thirty Second Street	Approved with Conditions	N/A	2015
31	41	22 Thirtieth Street	Approved with Conditions	N/A	2015
51	64	9 Thirty Second Street	Approved with Conditions	N/A	2016
52	66	4 Twenty Ninth Street	Approved with Conditions	N/A	2016

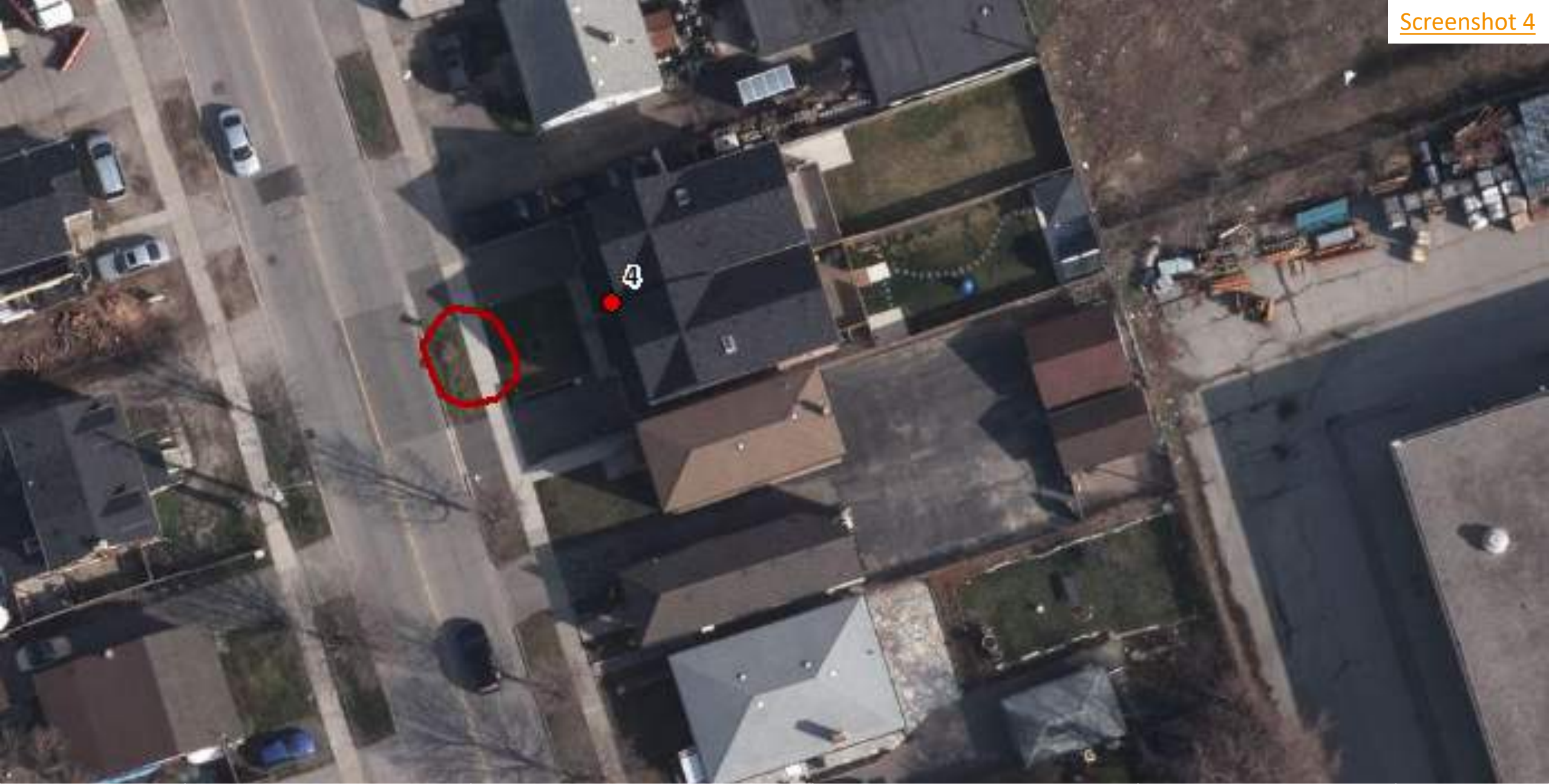
Screenshot 2



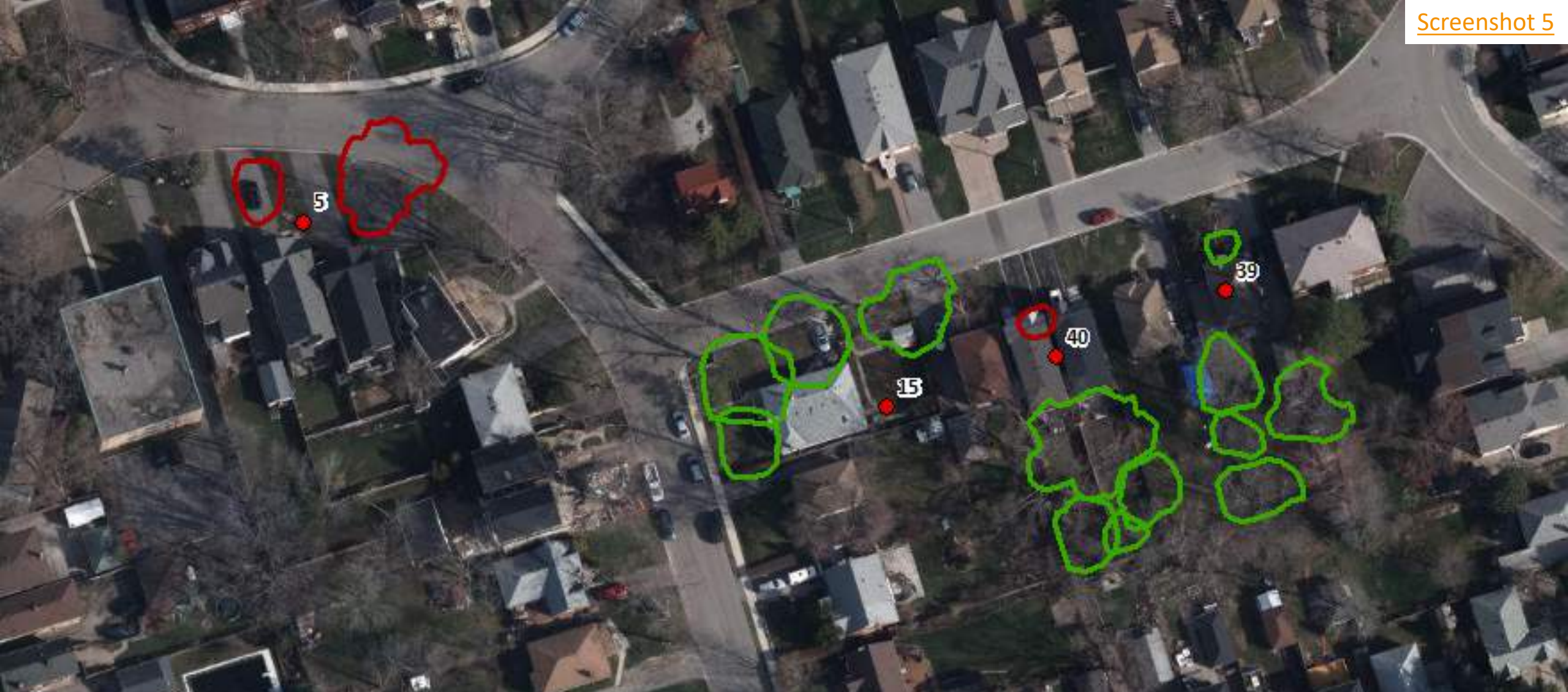
Name	UniqueID	Property Address	COA Decision	OMB Decision	Year
2	2	74 Elder Avenue	Approved with Conditions	N/A	2012
12	16	73 Laburnham Avenue	Approved with Conditions	N/A	2013
16	20	68 Elder Avenue	Approved with Conditions	N/A	2013
27	35	69 Laburnham Avenue	Approved with Conditions	N/A	2015
36	46	88 Laburnham Avenue	Approved with Conditions	N/A	2015
56	88	79 Laburnham Avenue	Approved with Conditions	N/A	2017



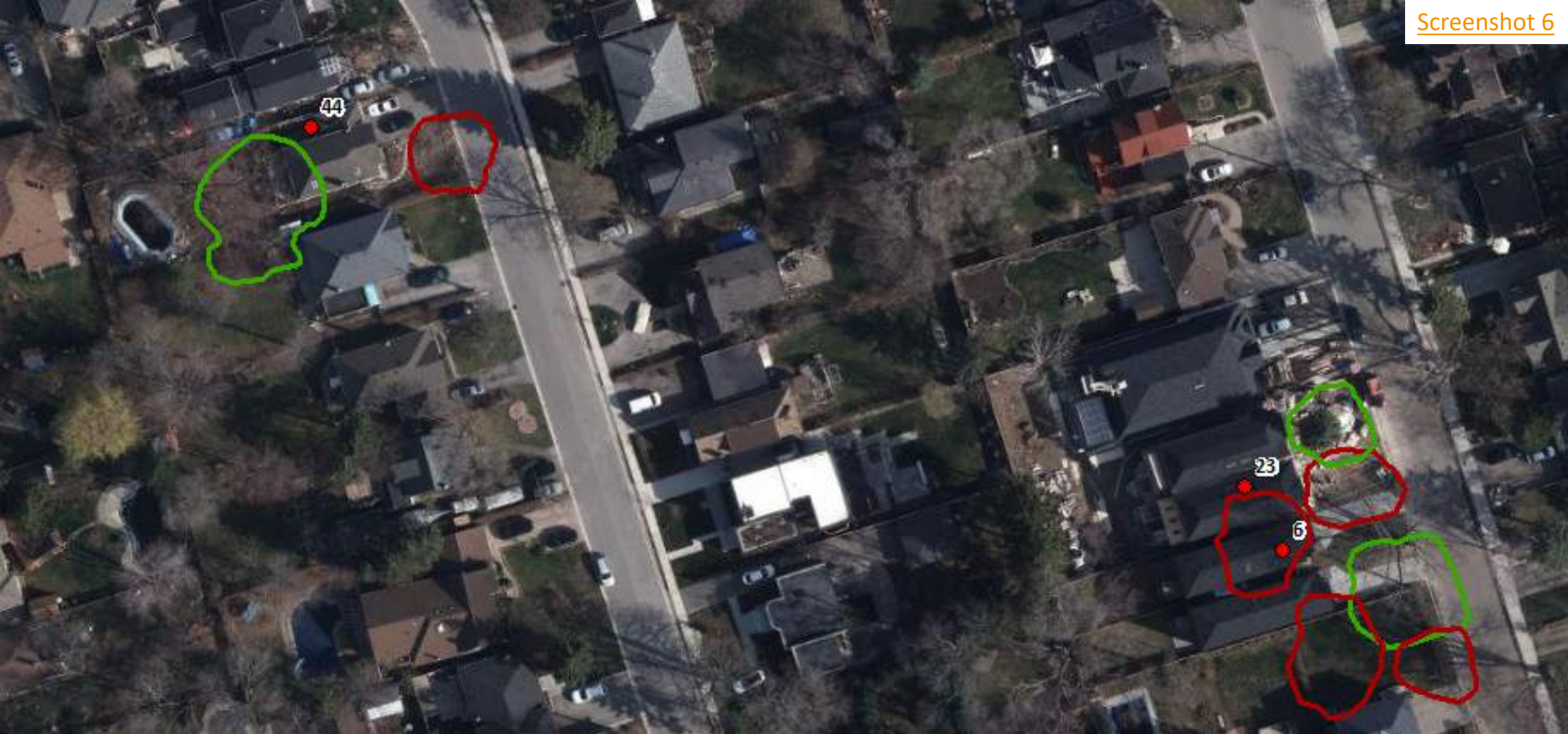
Name	UniqueID	Property Address	COA Decision	OMB Decision	Year
3	4	86 Twenty Third Street	Approved with Conditions	N/A	2012
26	34	97 Twenty Seventh Street	Refused	Approved with Conditions	2015
35	45	2 Ash Crescent	Approved/Refused	Approved with Conditions	2015
43	53	80 Twenty Third Street	Refused	Approved with Modifications and Conditions	2016



Name	UniqueID	Property Address	COA Decision	OMB Decision	Year
4	5	185 Thirtieth Street	Approved with Conditions	N/A	2012

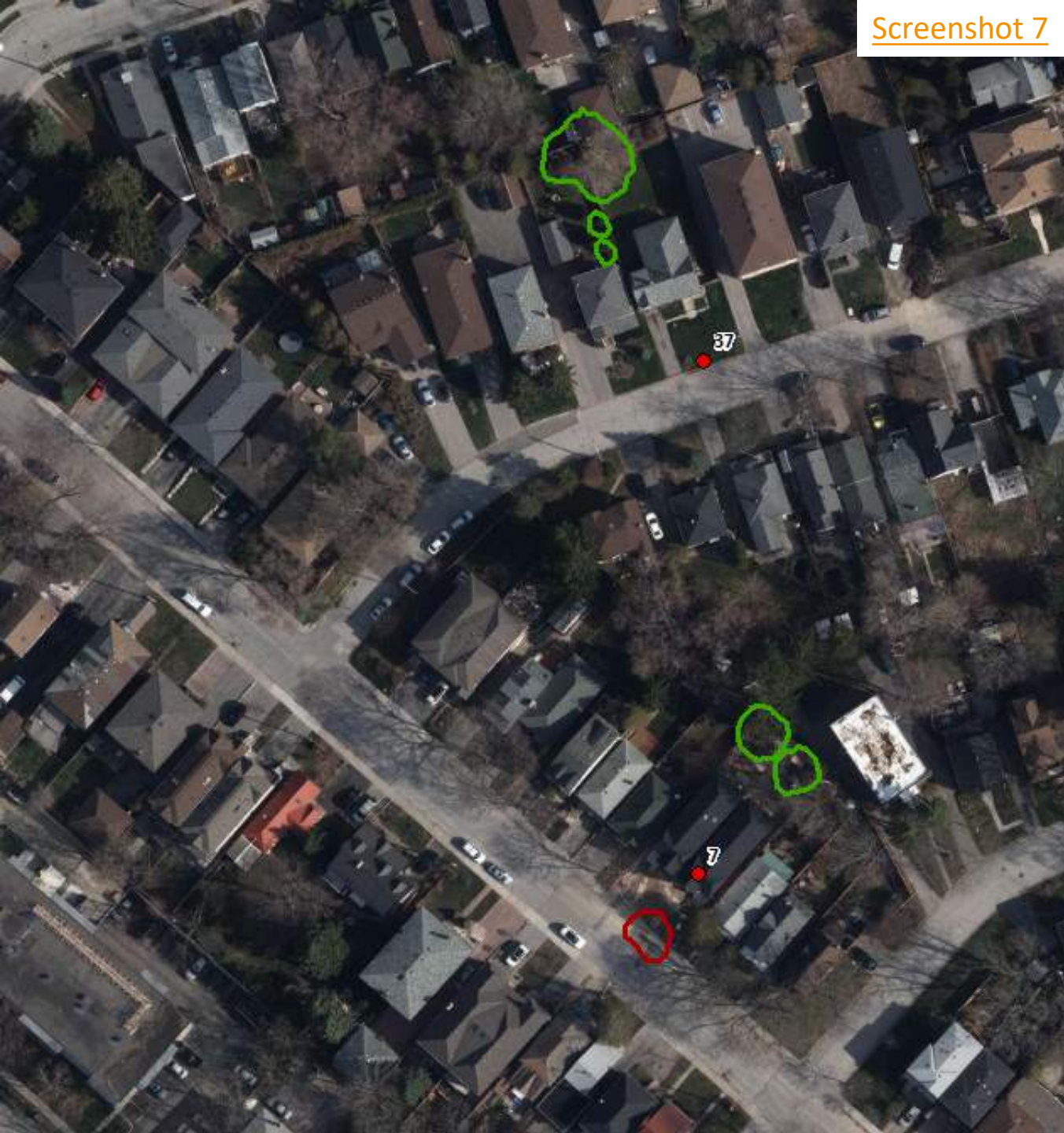


Name	UniqueID	Property Address	COA Decision	OMB Decision	Year
5	7	38 Arcadian Circle	Approved with Conditions	N/A	2012
15	19	6 Shamrock Avenue	Refused	Approved with Conditions	2013
39	49	2 Shamrock Avenue	Refused	Approved with Conditions	2016
40	50	4 Shamrock Avenue	Refused	Approved with Conditions	2016



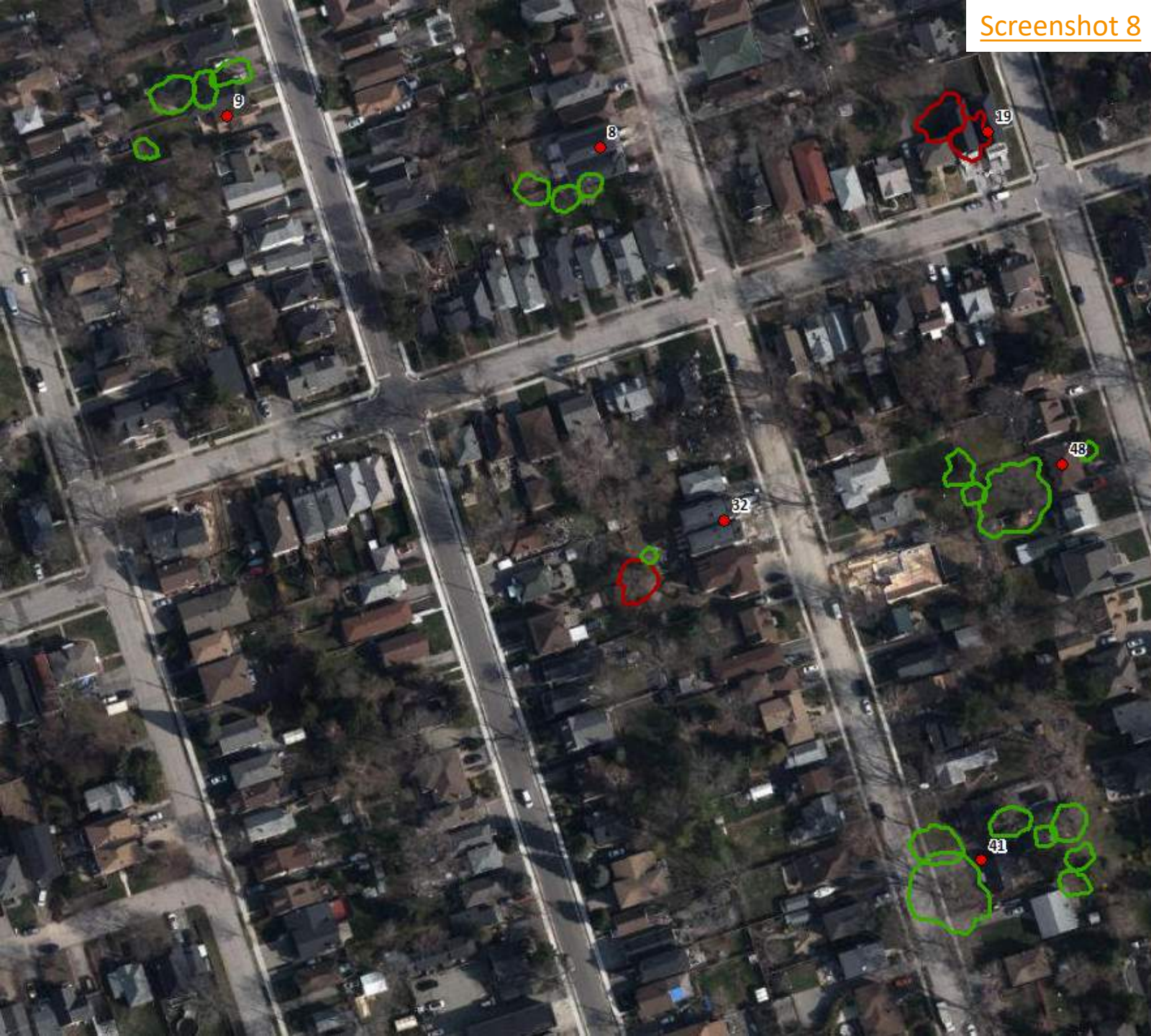
Name	UniqueID	Property Address	COA Decision	OMB Decision	Year
6	8	2 Twenty Seventh Street	Approved with Conditions	Approved with Conditions	2012
23	30	4 Twenty Seventh Street	Refused	Approved with Conditions	2014
44	54	20 Elton Crescent	Refused	Approved with Conditions	2016

Screenshot 7

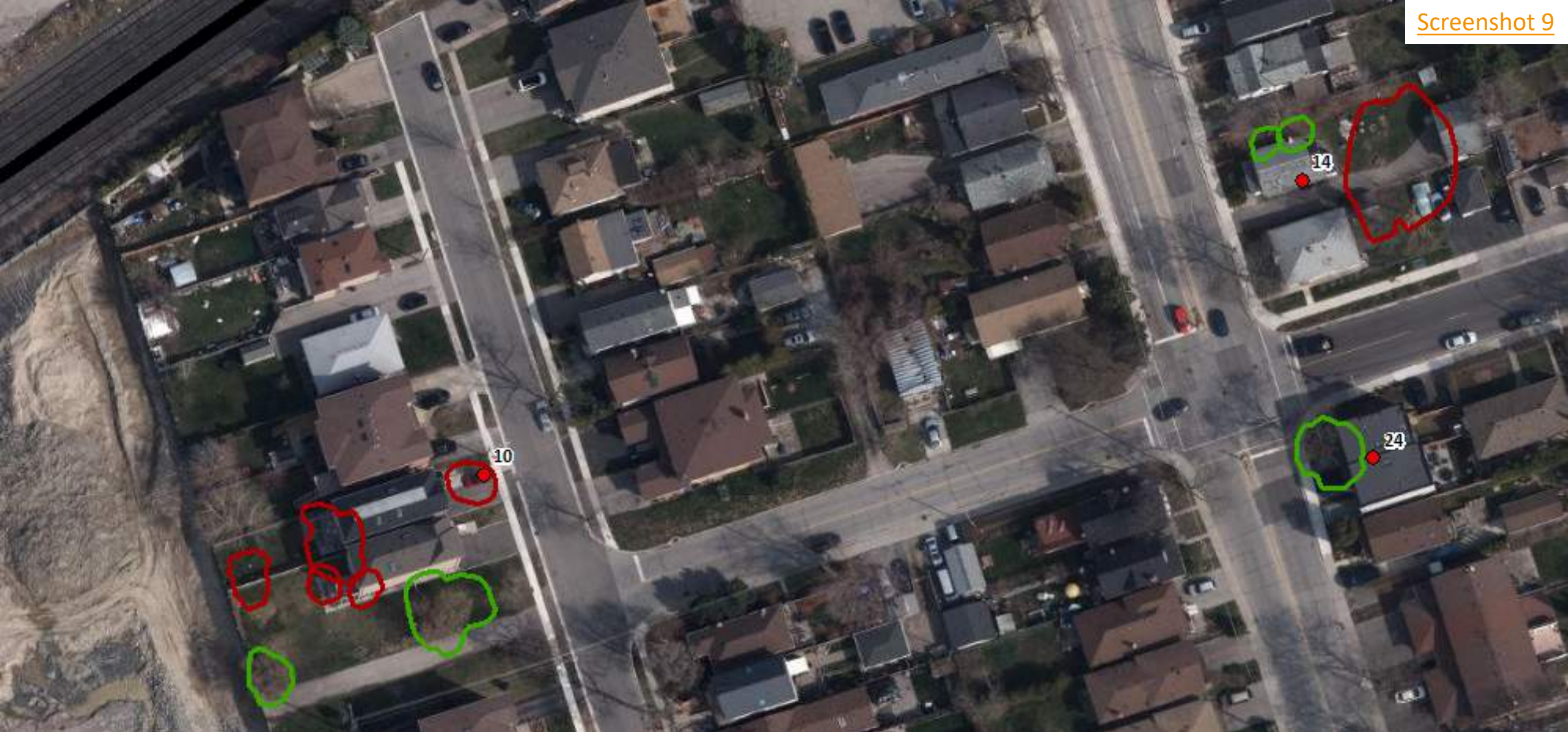


Name	UniqueID	Property Address	COA Decision	OMB Decision	Year
7	9	33 Forty First Street	Approved with Conditions	N/A	2013
37	47	20 Garden Place	Refused	Approved with Conditions	2015

Screenshot 8

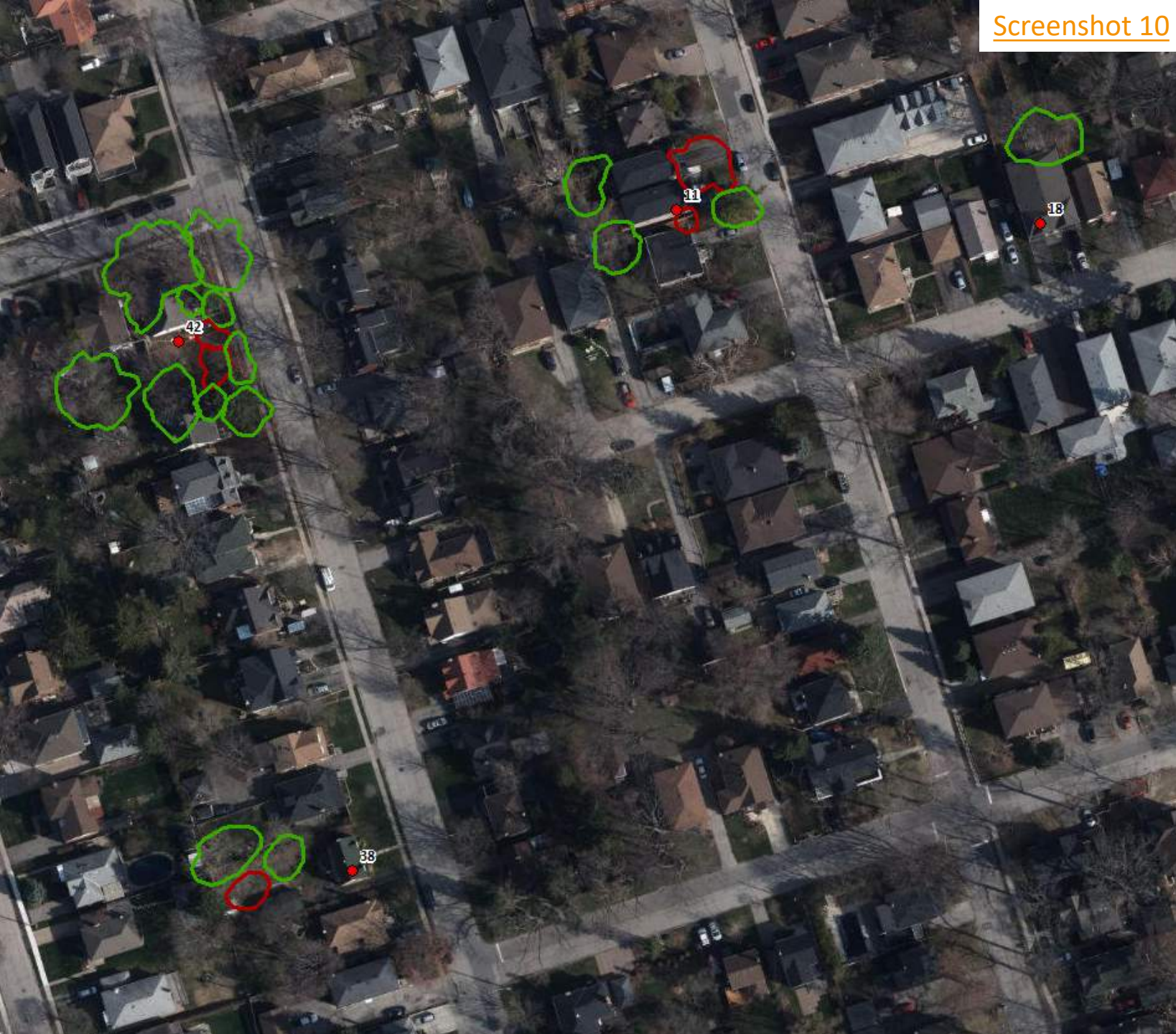


Name	UniqueID	Property Address	COA Decision	OMB Decision	Year
8	10	52 Thirty Eighth Street	Approved with Conditions	N/A	2013
9	11	76 Thirty Ninth Street	Approved with Conditions	N/A	2013
19	26	20 James Street	Refused	Approved with Conditions	2014
32	42	40 Thirty Eighth Street	Approved with Conditions	N/A	2015
41	51	9 Thirty Eighth Street	Approved with Conditions	Approved with Conditions	2016
48	60	40 Thirty Seventh Street	Refused	Approved with Conditions	2016



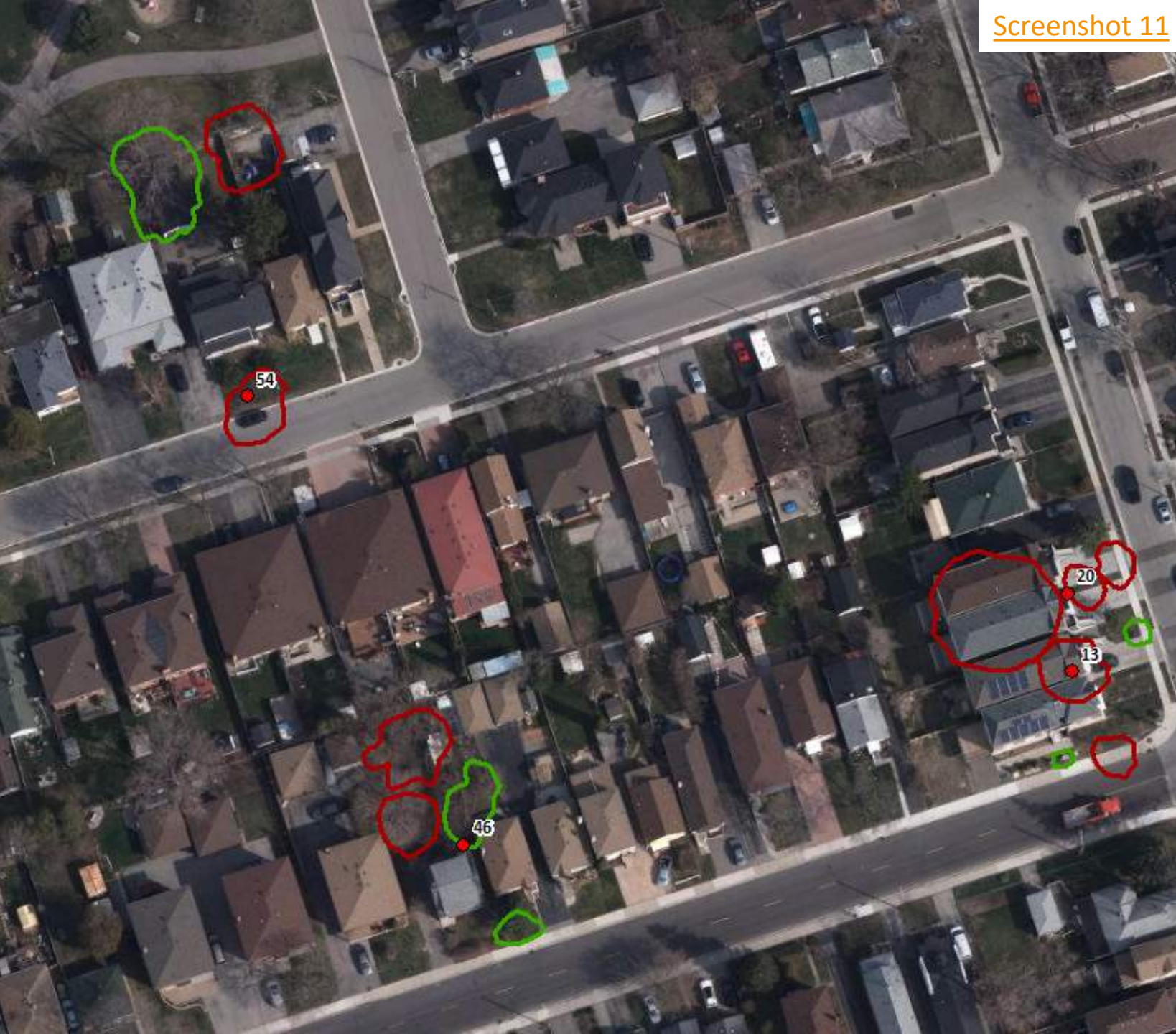
Name	UniqueID	Property Address	COA Decision	OMB Decision	Year
10	13	58 Thirty Second Street	Approved with Conditions	N/A	2013
14	18	67 Thirtieth Street	Approved with Conditions	N/A	2013
24	31	59 Thirtieth Street	Approved with Conditions	N/A	2014

Screenshot 10



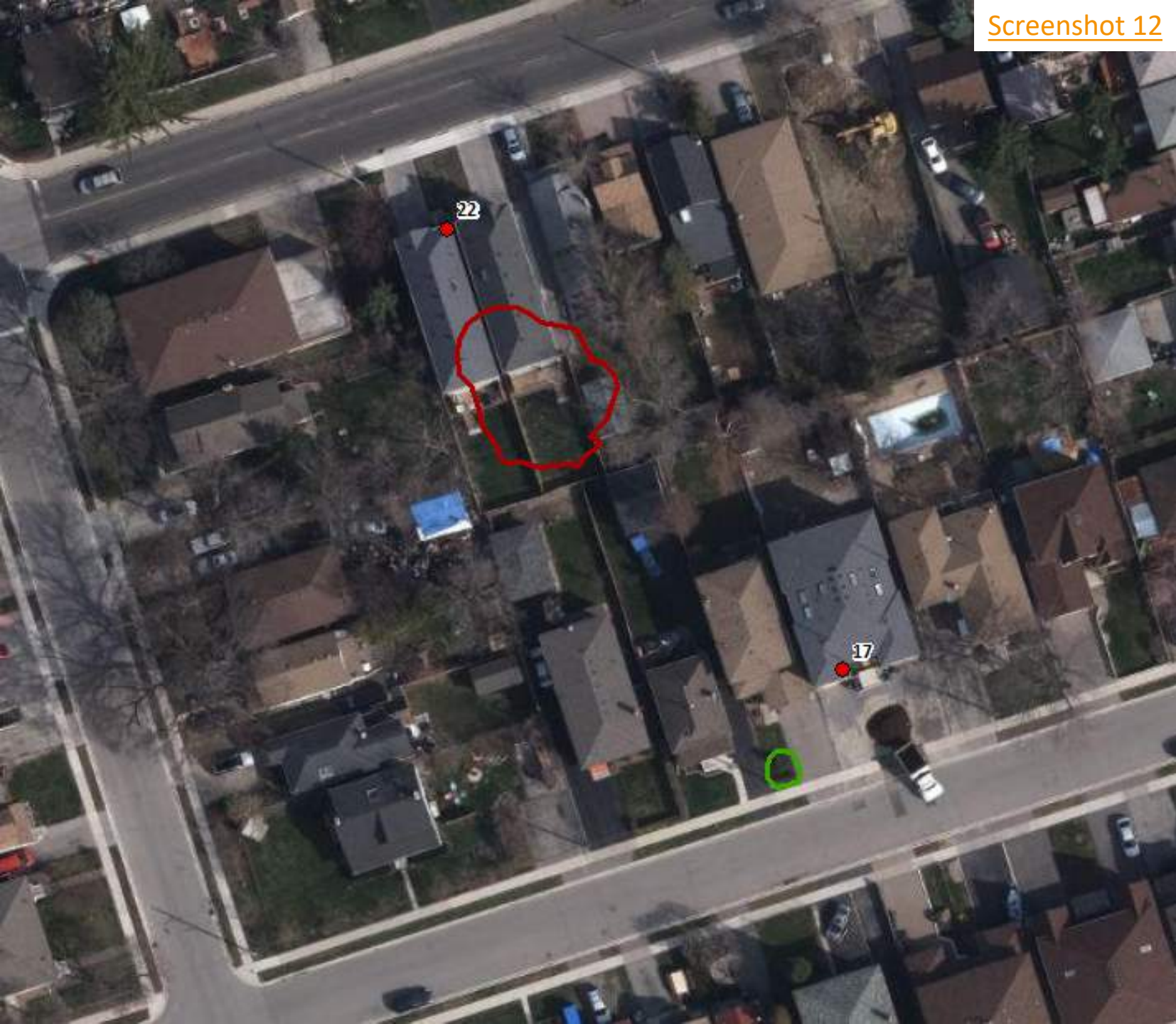
Name	UniqueID	Property Address	COA Decision	OMB Decision	Year
11	15	48 Thirty Fifth Street	Refused	Approved with Conditions	2013
18	25	30 Muskoka Avenue	Approved with Conditions	N/A	2014
38	48	30 Thirty Sixth Street	Refused	Approved with Conditions	2016
42	52	50 Thirty Sixth Street	Approved with Conditions	N/A	2016

Screenshot 11



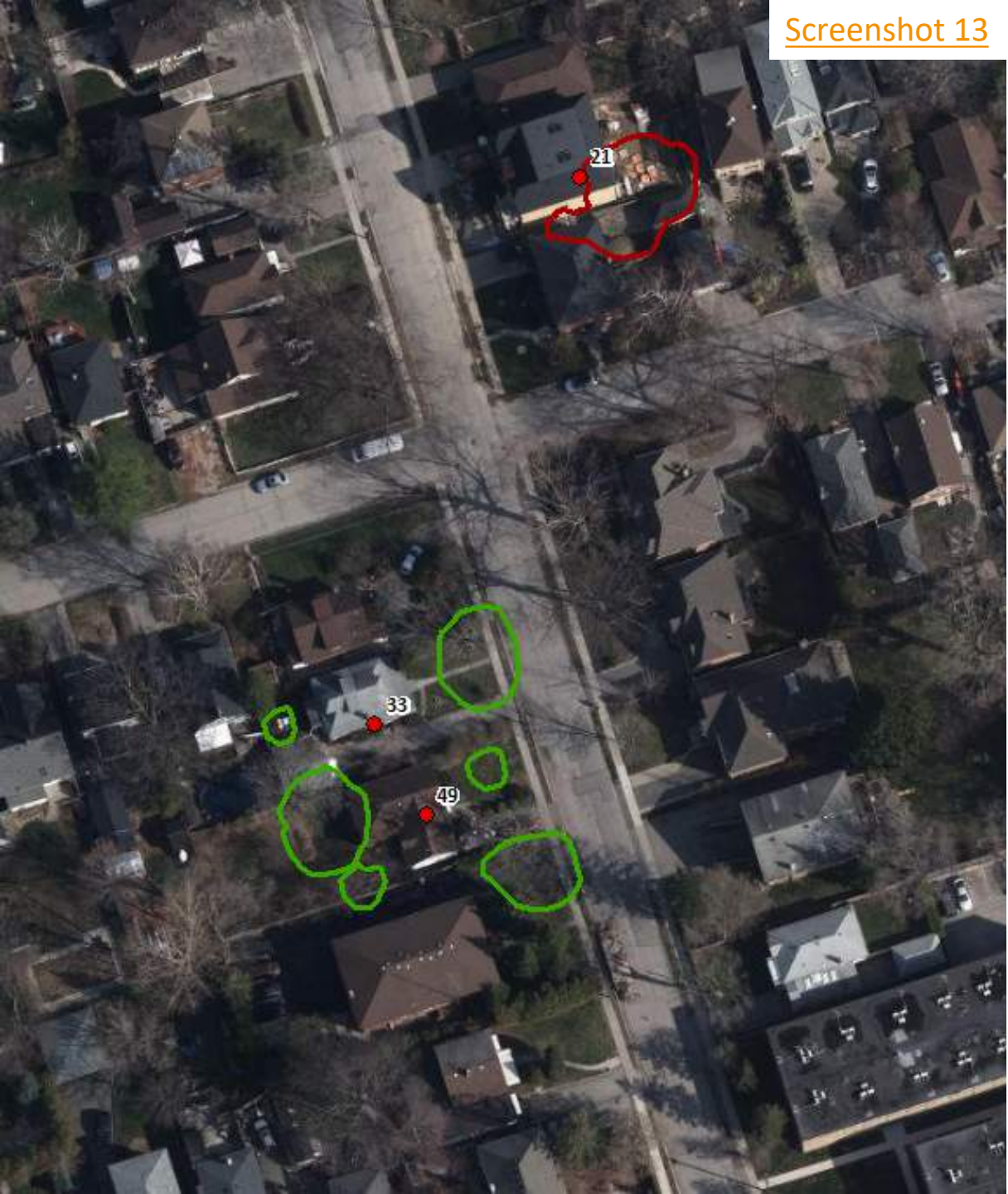
Name	UniqueID	Property Address	COA Decision	OMB Decision	Year
13	17	56 Twenty Sixth Street	Approved with Conditions	N/A	2013
20	27	60 Twenty Sixth Street	Approved with Conditions	N/A	2014
46	56	48 Elder Avenue	Approved with Conditions	N/A	2016
54	71	50 Laburnham Street	Approved with Conditions	N/A	2017

Screenshot 12

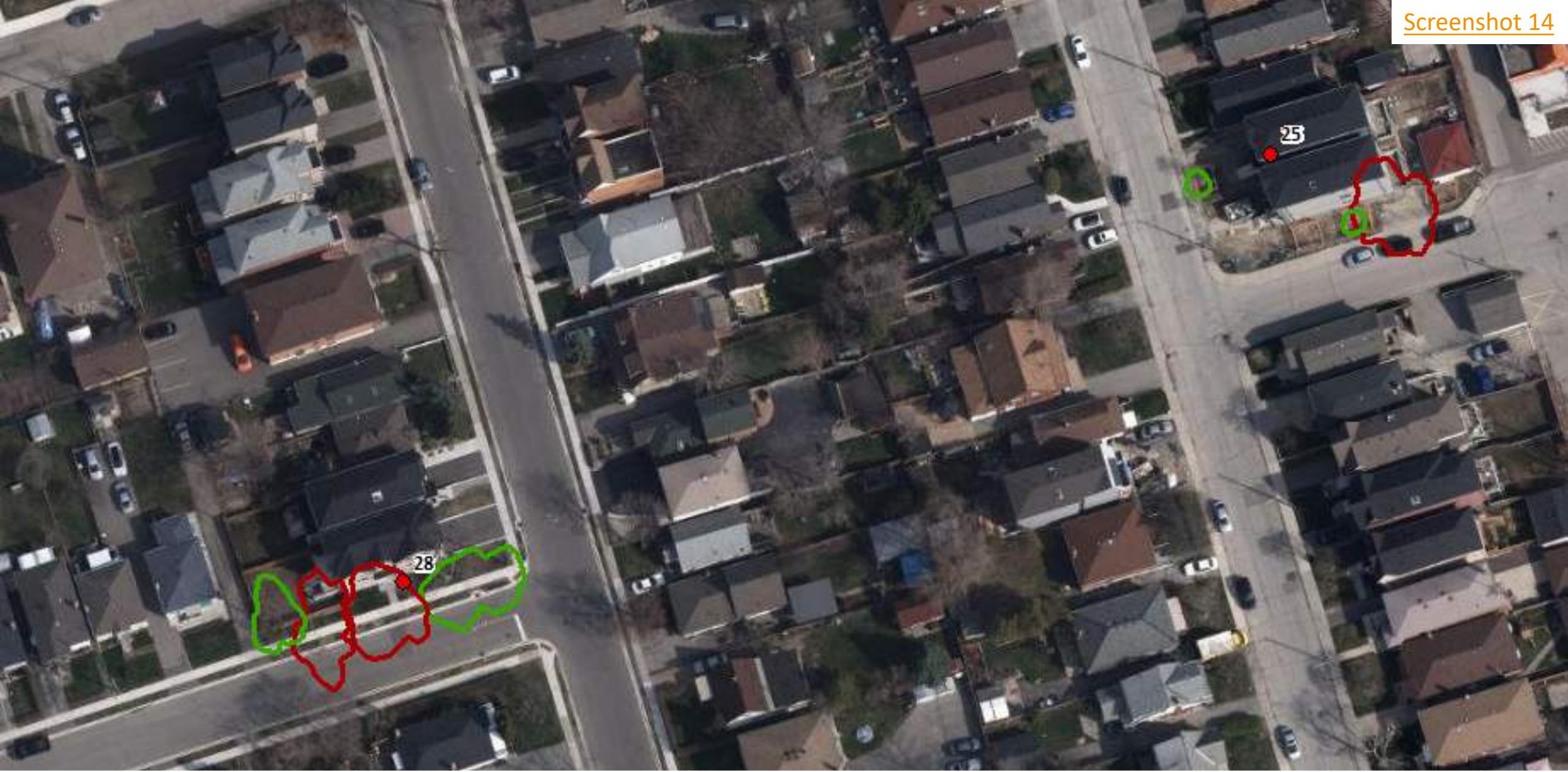


Name	UniqueID	Property Address	COA Decision	OMB Decision	Year
17	23	18 Daisy Avenue	Refused	Approved with Conditions	2014
22	29	25 Elder Avenue	Approved with Conditions	N/A	2014

Screenshot 13

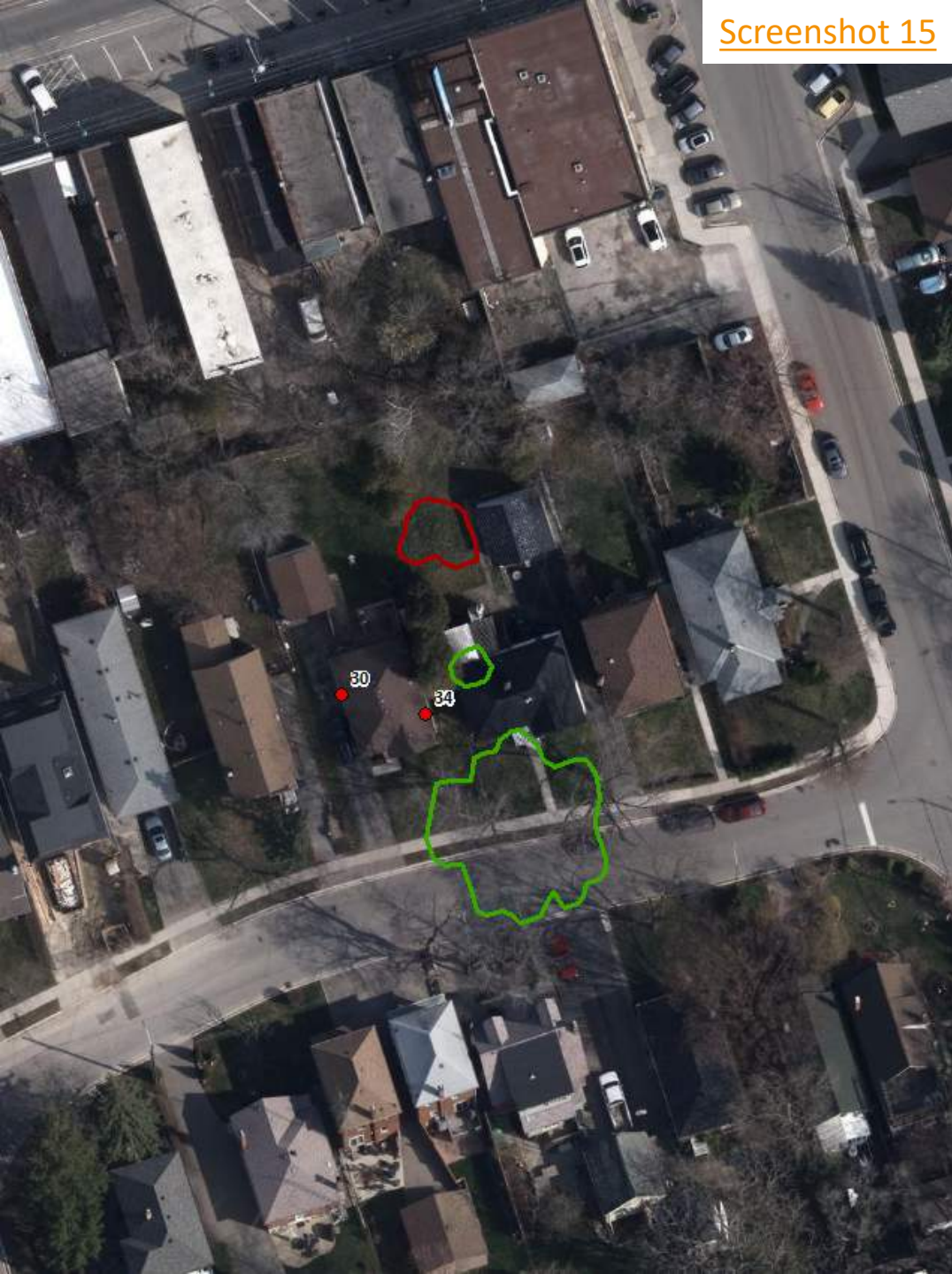


Name	UniqueID	Property Address	COA Decision	OMB Decision	Year
21	28	39 Thirty Third Street	Refused	Approved with Conditions	2014
33	43	24 Thirty Third Street	Approved with Conditions	Approved with Conditions	2015
49	62	22 Thirty Third Street	Refused	Approved with Conditions	2016



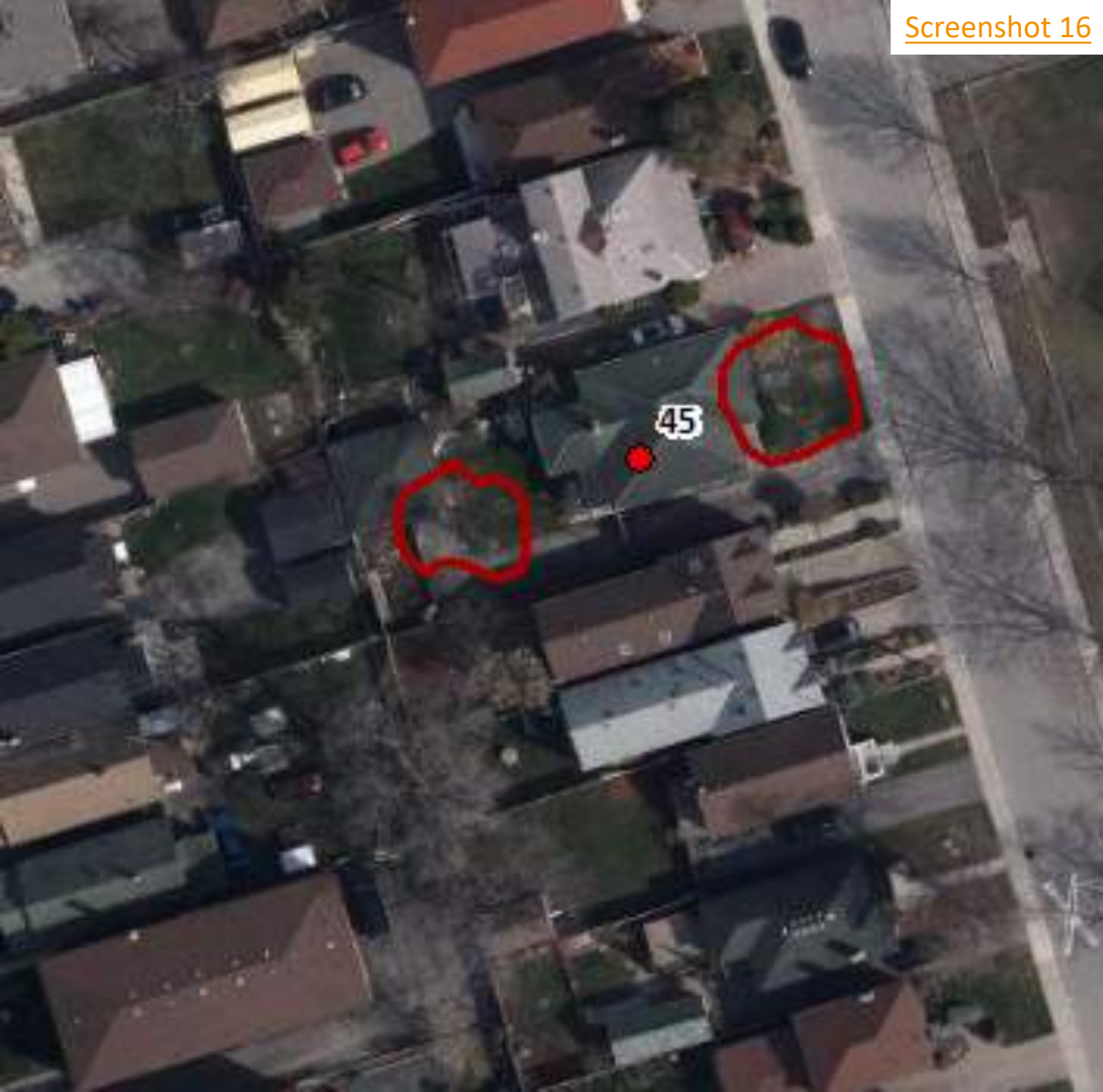
Name	UniqueID	Property Address	COA Decision	OMB Decision	Year
25	33	105 Twenty Second Street	Approved with Conditions	N/A	2015
28	36	84 Twenty Fourth Street	Approved with Conditions	N/A	2015

Screenshot 15



Name	UniqueID	Property Address	COA Decision	OMB Decision	Year
30	40	58 Ash Crescent	Refused	Approved with Conditions	2015
34	44	56 Ash Crescent	Approved with Conditions	Approved with Conditions	2015

Screenshot 16



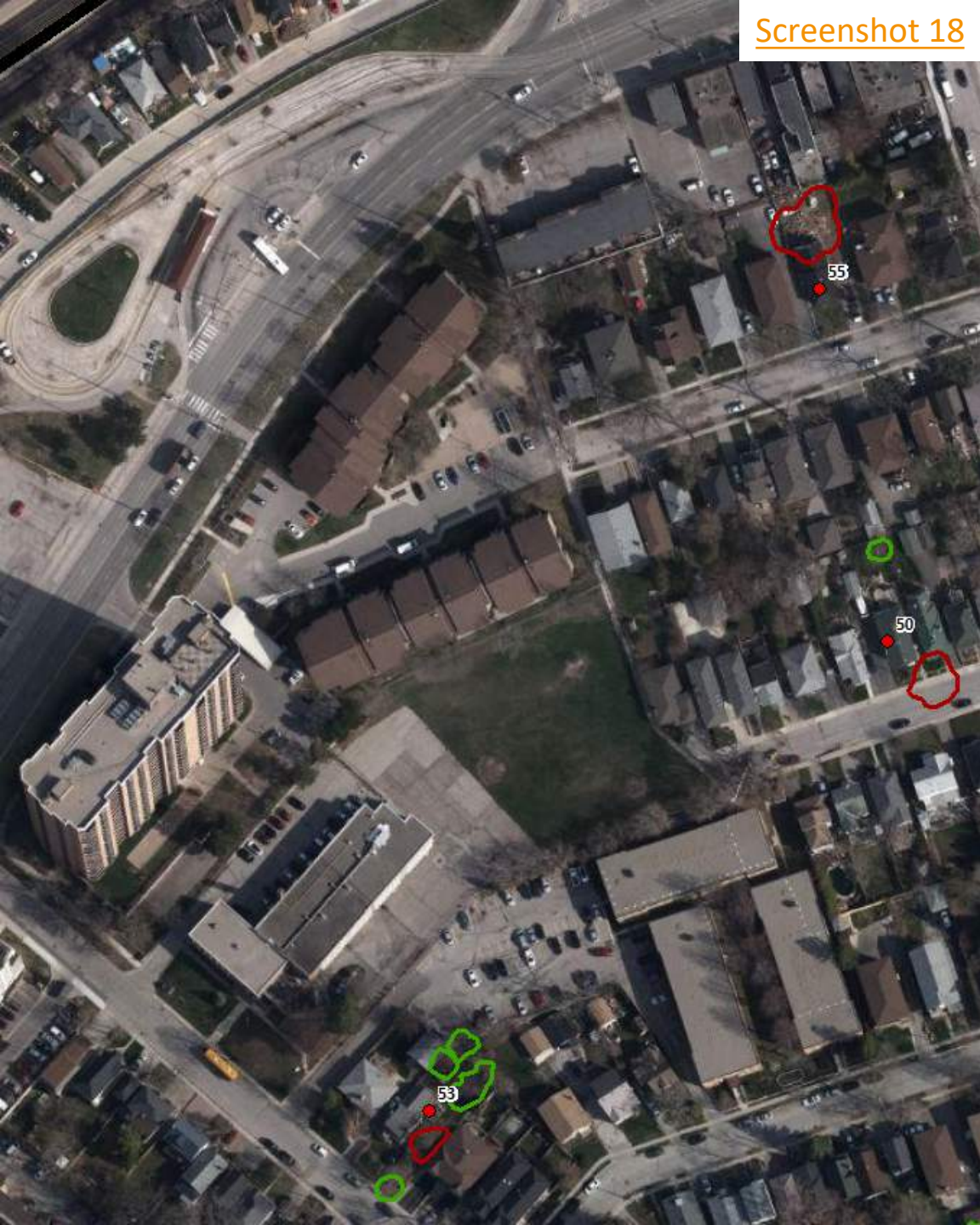
Name	UniqueID	Property Address	COA Decision	OMB Decision	Year
45	55	28 Twenty First Street	Approved with Conditions	N/A	2016

Screenshot 17



Name	UniqueID	Property Address	COA Decision	OMB Decision	Year
47	59	5 Thirty First Street	Approved with Conditions	Approved with Conditions	2016

Screenshot 18



Name	UniqueID	Property Address	COA Decision	OMB Decision	Year
50	63	14 Villa Road	Approved with Conditions	Approved with Conditions	2016
53	70	75 Forty First Street	Approved with Conditions	N/A	2016
55	75	8 Branch Avenue	Approved with Conditions	N/A	2017

# Thank you

- Contact can be made with D. Puric-Mladenovic for further information regarding the canopy loss assessment in Long Branch



UNIVERSITY OF  
**TORONTO**



**LONG BRANCH**  
NEIGHBOURHOOD  
ASSOCIATION